



GLENDALE
CITY CHURCH

110

Celebrating 110 Years: 1906-2016

Finding God at the Intersection of Our Lives

October 22, 2016

610 E. California Avenue, Glendale, CA 91206
818-244-7241 • www.glendalecitychurch.org

"Revealing Christ, affirming all"

Sermon "FINDING GOD AT THE INTERSECTION OF OUR LIVES:
Creating New Intersections" Todd Leonard

Call to Offering Todd Leonard

Offertory "Thus saith the Lord/But who may abide" (*Messiah*) *Handel*
Steve Pence, *bass*
(Unless otherwise marked, loose offering goes to local church expense)

Hymn of Response "In the Midst of New Dimensions" Tune: NEW DIMENSIONS

1. In the midst of new dimensions, in the face of changing ways,
Who will lead the pilgrim peoples, wandering in their separate ways?

Refrain:

God of rainbow, fiery pillar, leading where the eagles soar,
We your people, ours the journey, now and ever, now and ever. Now and evermore.

2. Through the flood of starving people, warring factions and despair,
Who will lift the olive branches? Who will light the flame of care?

3. As we stand a world divided by our own self-seeking schemes,
Grant that we, your global village, might envision wider dreams.

4. We are man and we are woman, all persuasions, old and young,
Each a gift in your creation, each a love song to be sung.

5. Should the threats of dire predictions cause us to withdraw in pain,
May your blazing phoenix spirit resurrect the church again.

Benediction (*Please be seated after the benediction*) Todd Leonard

Choral Response "God Be With You Till We Meet Again"

Postlude Choral Improvisation on "Now Thank We All Our God" *Sigfrid Karg-Elert*



Whether you're a regular member or a visitor, we encourage you to continue to fellowship with our Church family after the worship service! Please also feel free to contact any of our pastoral staff if you have a question, want a visit, or need help.

CHURCH LIFE

All are welcome — whoever you are, whatever your journey or background. God excludes no one, and neither do we.

Prayer concerns for serious health challenges: Rosana, Graciela Seco's sister; Mary, mother-in-law of Lela Leong's brother; and Daniel Chaney, who is undergoing further treatment.

October sermon series concludes today with Pastor Todd's sermon "Finding God at the Intersection of Our Lives".

Potluck following the worship service in Fellowship Hall. All welcome.

The Los Angeles Adventist Forum, today, 3:00 p.m., Chapel. Loma Linda University faculty Richard Rice and Gail Rice, together with Jared Wright, Managing Editor of the SPECTRUM website, will reprise a portion of the Annual Adventist Forum Conference on "Non-Violence and the Atonement", and will also discuss matters of interest from the perspective of the SPECTRUM website. Free and open to all!



Day of Remembrance, Worship Service, November 5. During worship service on this day we will take a moment to remember the loved ones who have passed in the last year. Come to service to light a candle, or to submit names to the church office so that we may memorialize them in the bulletin.

Support Your Church Through Grocery Shopping! If you haven't had the chance to register your Ralphs Rewards card with Glendale City Church yet, please go to www.Ralphs.com and click on the "Community" link to learn how to all your future Ralphs purchases can provide a significant donation to your home church. If you don't have a Ralphs Rewards card and would like to sign up for one, pick up a rewards card and registration form in the church foyer.



Senior member would like to borrow a CD player so she can hear each week's service and sermon. Please contact the office or see one of the pastors if you are able to help. Thank you!

Church member has car for sale, 2013 white Chrysler 200, 40,000 miles. Contact Anji for more info, anjimom2@hotmail.com.

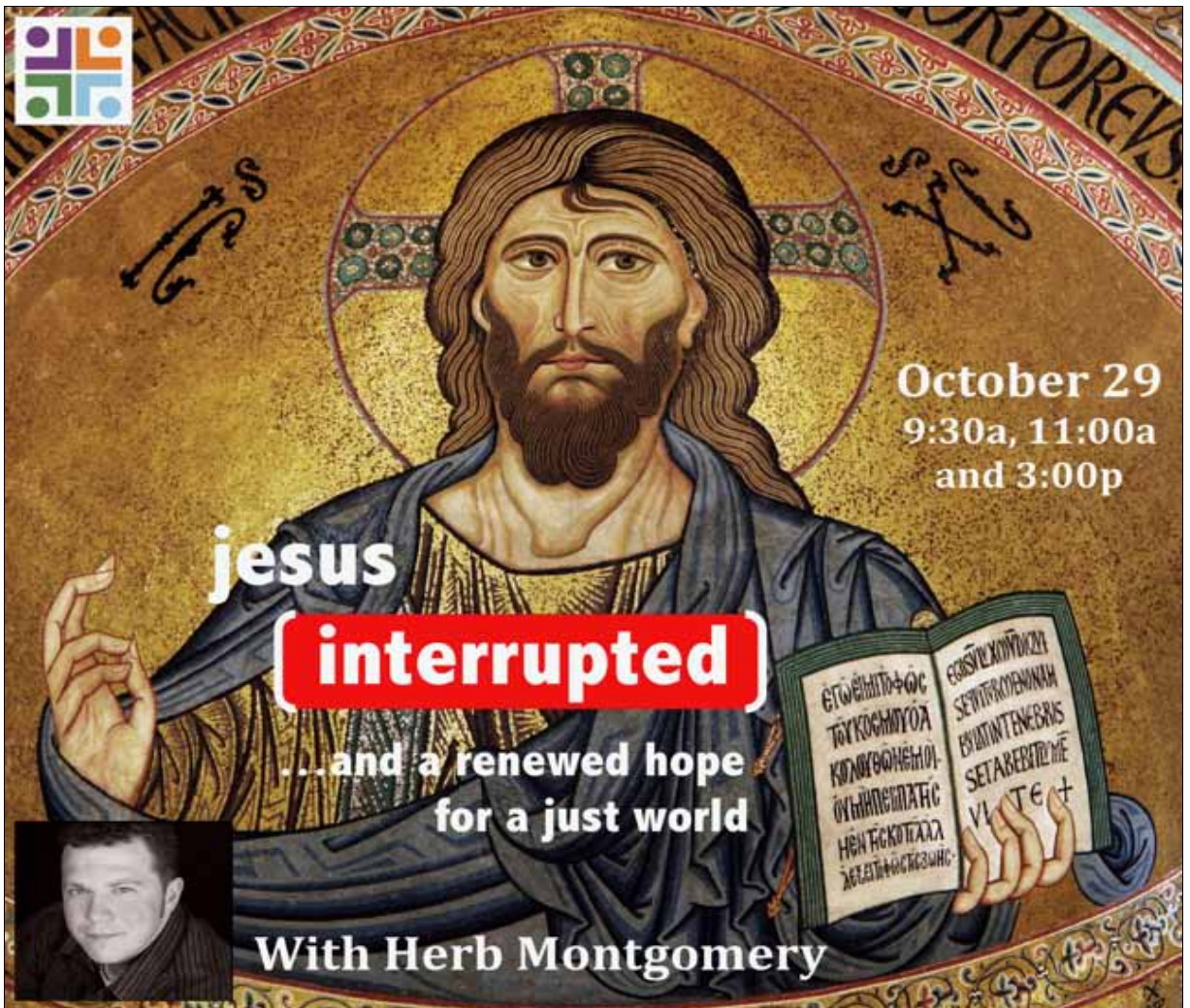
Spirituality & Health Seminar, Thursday, November 3, 8–10 a.m., Multipurpose Room. You are invited to this special event through GAMC to hear Harold G. Koenig, MD, MHSc present on the latest in spirituality and health, and the efforts with Adventist Health Systems on integrating spirituality into the outpatient practices of physicians. Light breakfast will be served. Open and free to all. To RSVP: Rita Ayvazian (ayvazirc@ah.com or 818-409-8514).

Glendale Adventist Academy Day, Tuesday, November 1, 8:15–2 p.m. Parents come with students for a day on campus with special presentations. A light breakfast and lunch will be served. For more information and to reserve your spot please call us at 818-244-8671.

Adventist Book Center Fall Sale. All October save 25% on Ellen White books and select Loma Linda foods.



Join City Church in walking for a cause tomorrow, Sunday, October 23. For carpooling or any other information or questions, please contact Arlene Chow, arlenechow@gmail.com.



October 29
9:30a, 11:00a
and 3:00p

jesus

interrupted

...and a renewed hope
for a just world

With Herb Montgomery



SCHEDULE FOR SATURDAY, OCTOBER 29

Presentation 1—9:30 a.m., Chapel

Presentation 2—11:00 a.m., Sanctuary

Presentation 3—3:00 p.m. with Daneen Akers, Chapel
(childcare will be provided during all sessions)

Small Group Lunch Dialogue with Herb Montgomery*

@Panera Bread Company (300 N. Brand Blvd.), 1:00 p.m.

*Lunch Dialogue is only for the first 20 people to **RSVP**
(glendalesda@gmail.com) \$20-per-person

WORSHIP FOR KIDS AND TEENS



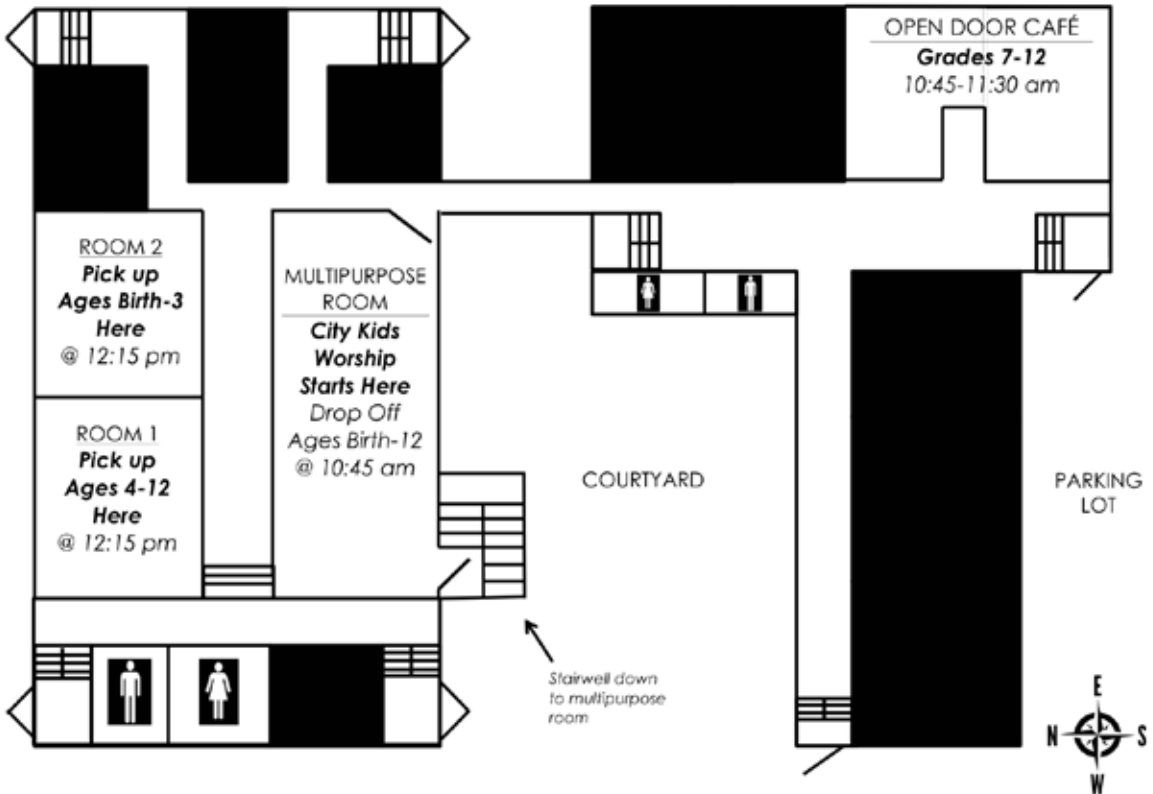
City Kids' Worship meets downstairs to different classrooms for age-appropriate spiritual experiences with their friends. Children ages birth to 3 are required to have one parent stay with them throughout the City Kids' worship experience. Older kids can be dropped off at the multipurpose room and picked up at their age-designated classroom as soon as adult worship concludes.



Open Door is a safe space for middle- and high-school students to talk about the issues facing them. Pastor Arleene Chow leads thought-provoking discussions on what spirituality looks like in all their relationships and helps them make smart decisions as they move towards adulthood. At 11:30, the teens are dismissed to join the adults for the sermon and the remainder of worship.

Map to City Kids Worship & Open Door Café

Both Gatherings Meet in Lower Level Rooms





City Church and Urban Liturgy invite you to a safe gathering place for people to work out a shared spirituality. **Urban Liturgy (UL)** is an alternate space where workshop spirituality can be done through collaborative thinking and sharing.

While the term “worship” isn't a completely accurate depiction of what takes place, **UL** sessions are intended to provide the mystical, communal, and sacred space experience that worship has been for so many others. You will find this space evolves week to week as you participate. It is just different.

**TODAY: “Creating Intersections”
Multipurpose Room, 3 p.m.**

Finding God at the intersection of your life. If a church believes that God is experienced in unique ways when people come together, then its mission should be about continually finding opportunities to intersect with new people. How do we do that? What intersections can be created in Glendale and L.A.?

Please note we will meet next Saturday. See Schedule for Herb Montgomery for more details.

UPCOMING SERMONS & EVENTS

October: LGBT History Month

October 29 Herb Montgomery
Please note that this day no Sabbath Schools will meet.
See flyer in bulletin for the schedule.

November 5	Day of Remembrance	Todd Leonard
November 12		Anthony Paschal
November 19	Thanksgiving	Todd Leonard
November 26		Todd Leonard

GETTING TO KNOW THE PEOPLE IN YOUR CHURCH BETTER 2016!

As an inclusive and welcoming congregation, Glendale City Church has a wonderfully diverse group of people who call this church home. We have tried to focus on a different segment of our congregation each month: In October we focus on LGBT History Month, when we will be highlighting LGBT composers in our music each week. In the canon of great musical composers, as with all walks of life, some of them were undoubtedly gay or lesbian; but as we go further back in history, it can become harder to know for sure. Historically, there have always been people with non-heterosexual orientations, but it is only in modern times that society has come to understand and recognize sexual orientation as an essential aspect of identity, and only much more recently (and still only in certain places) that people of different sexual orientations can live out their identities and their relationships openly, without undue fear of rejection. In most earlier times and places, people with a different sexual orientation might have had secret love lives, or might have attempted to suppress their orientation, or might have not even really understood themselves at all in the way that we can today. Through October, we will highlight composers through different ages, from classical era composers (where we have to do our best to distinguish scholarly opinion from rumor as to who may have been gay); to the late 19th and early 20th century where some composers were known to be gay although not generally completely “out” about it; and to contemporary times when some composers are able to openly identify as gay, lesbian, or transgender. *(We express appreciation for this month’s information, provided by **Tom Chatt.**)*

TODAY’S MUSIC HIGHLIGHTS THREE LGBT COMPOSERS:

Aaron Copland (1900-1990) has been called the “Dean of American composers”, both for the impact of his own musical contributions and for his influence and encouragement of younger composers. The open, slowly changing harmonies in much of his music are typical of what many people consider to be the sound of American music, evoking the vast American landscape and pioneer spirit. He is best known for the works he wrote in the 1930s and 1940s in a deliberately accessible style he called his “vernacular” style, works such as the ballets “Appalachian Spring”, “Rodeo”, “Billy The Kid”, and his “Fanfare for the Common Man”. Copland’s sexuality was documented in Howard Pollack’s biography, “Aaron Copland: The Life and Work of An Uncommon Man”. Unlike many gay men of his age, Copland was neither ashamed of nor tortured by his sexuality. He apparently understood and accepted it from an early age, and throughout his life was involved in relationships with other men. While studying in Europe, he met young violinist Victor Kraft, and they had a romantic relationship for some of Copland’s most productive years, living together as a couple in New York City. In later years, Copland had relationships with various younger musicians and artists whom he also mentored and supported. Many of his affairs morphed into long term friendships. He and Kraft were traveling companions late in life. Given the social prejudices of the times in which he lived, Copland was relatively open about his sexuality, yet this seems not to have interfered with the acceptance of his music or with his status as a cultural figure. The likely explanation is that Copland conducted his personal life with the characteristic modesty, tactfulness, and serenity that marked his professional life as well. At one point, Leonard Bernstein pressured his mentor and friend to publicly come out. Copland wryly responded, “I think I’ll leave that to you, boy.”

Virgil Fox (1912-1980), was the organist at the Riverside Church in New York City from 1946 to 1965, and a famous interpreter of Bach. He made numerous recordings and drew thousands to his concerts throughout the 1970s. He was called the Liberace of the pipe organ, with his flamboyant musical style matched by his personal style. He often performed wearing a red beret, a satin-lined cape, and rhinestone-studded shoes. “To anyone who was gay, there was no question as to what Virgil was,” one of his students later wrote, and Fox made no bones about being gay. “He was quite proud of what he was, and never once did he feel the slightest bit second class.” Our organ prelude this morning is by Bach, in an arrangement by Virgil Fox.

Benjamin Britten (1913-1976), an English composer and conductor, was one of the greats of 20th century English classical music. He is best known for his operas, including “Peter Grimes”, “Billy Budd”, and “The Turn of the Screw”, and also for his work “The Young Person’s Guide to the Orchestra”. In his 20s, Britten had a circle of gay friends including poet W.H. Auden and the writer Christopher Isherwood, and he met the tenor Peter Pears, who would become his lifelong loving companion and collaborator. Britten often wrote music with specific performers in mind, and Pears was his most enduring muse, with most of Britten’s greatest operas written for Pears. They toured together, and after World War II, settled in the coastal town of Aldeburgh, where they established the Aldeburgh Festival for Music, and later built a concert hall called the Snape Maltings. The two remained devoted to each other, and active in music, for the remainder of their lives. It is interesting to read the 1976 New York Times obituary for Britten, which describes Pears as a “longtime friend”, describing how the two men, “both bachelors”, shared a home and traveled together for nearly 40 years. When Pears died 10 years later in 1986, the *Times* could bring itself to write of his “personal and professional partnership” with Britten. The two are buried side by side with matching headstones in St. Paul’s Churchyard, in Aldeburgh, Suffolk, England, where they had lived since the war. Britten was offered burial in Westminster Abbey, but he was clear in his wishes to be buried beside Pears.



**“ENOUGH ROOM AT THE TABLE:
A Companion Film to Seventh-Gay Adventists”**
Screening and Dialogue with Producers and Participants
Glendale City Church, Friday Evening, October 28
Haystack Supper, 6:30 p.m.
Film, 7:30 p.m.
After Party & Dialogue, 9:30 p.m.

To reserve your ticket, you can pay by credit card at GlendaleCommunitasInitiative.org or by check or cash by turning them in during the offering collection. Make your check payable to "Communitas" and mark your offering envelope "Communitas Supper."

Glendale Communitas Initiative

Doing good, together!



November 5, 2016, 6:00 pm

Registration Deadline: October 29

Salem Lutheran Church

1211 N Brand Blvd



A+ Adventist Children's Center
Invites you to our

Adult: \$10
Child: \$5



Family &
Friends are
always
welcomed for
lots of fun !!

When: Thursday, October 27, 2016

Where: 234 N. Isabel St.
Glendale, CA 91206

Time: 3-6 pm. Fall Festival
(Bounce House & Petting Zoo)
silent auction closes at 7pm.

6-8 pm. Pasta Dinner & Live Auction



ELDER OF THE DAY: Beverly Tarr

• **DEACON OF THE DAY:** Ronald Matusa

ADULT SABBATH SCHOOL BIBLE STUDY OPTIONS (9:30-10:30 A.M.)

- SABBATH SCHOOL QUARTERLY (TRADITIONAL, CHAPEL)— Current study theme: “The Book of Job”. If God exists, and is so good, so loving, and so powerful, why is there so much suffering? This quarter’s theme takes up this subject, paying close attention to the controversy between Christ and Satan.
 - English Language Study—Chapel
 - Armenian Language Study—Room 11
 - Romanian Language Study—Room 13
- GRACE CENTER (FELLOWSHIP HALL, NORTH SIDE)— Current book study: “The Lost History of Christianity: The 1000-Year Golden Age of the Church in the Middle East, Africa, and Asia — and How It Died” by Philip Jenkins. Here is the untold story of the Christian Church’s first 1200 years *outside* of Western Europe, how it thrived and expanded as far as China and India —even after the arrival of Islam — and what that may signify in today’s conflict between Islam and Christianity. Hailed by Forbes as “one of America’s top religious scholars”, author Jenkins presents his substantial findings in a very readable style.
- THE LIVING PROJECT (FELLOWSHIP HALL, SOUTH SIDE)— Social and interactive sharing of personal, cultural, religious, scientific, and scriptural stories. As we connect with our stories we seek to discover our common story in God.

WORSHIP OPTIONS

Sanctuary Service

Sanctuary, every Saturday, 11 a.m.

Romanian Service

Fellowship Hall, 1st, 2nd, 3rd Saturdays, 11 a.m.

Armenian Service

Chapel, every Saturday 11 a.m.



facebook.com/
glendalecitychurch



@CityChurchGlen



iTunes audio sermons
“Glendale City Church”



Videos of our services available at glendalecitychurch.org or YouTube



CHURCH DIRECTORY

Pastoral Staff

Todd Leonard, *Senior* (818-244-7241 office)
Arleene Chow, *Youth & Young Adults* (818-472-5287)
Leif Lind, *Church Administration* (909-557-5230)
Anthony Paschal, *Church Life* (951-756-3605)

Rudy Torres, *Emeritus* (714-318-1975)
Hovik Sarrafian, *Armenian Senior* (909-796-9536)
Vartkes Azadian, *Armenian Associate* (626-335-6507)
Dorin Lataeanu, *Romanian* (909-528-2545)

Church Officers

Head Elder—John Nielsen (818-605-0057)
Head Deacon—Ronald Matusa (818-730-0350)
Head Deaconess—Eleanor Posner (818-281-5822)
Church Board Chair—Rudy Torres (714-318-1975)
Sanctuary Choir—Clarissa Shan (909-709-3596), *director*
Organist—Kemp Smeal (714-658-4885);
Taylor Ruhl, *assistant* (909-557-5229)

Secretary—Victoria Lucero (glendalesda@gmail.com)
Treasurer—Dean Vendouris (818-244-7241, office)
Church Clerk—Mindi Rüb (mindilus@mac.com)
Children’s Ministry Asst.—Anji Arm (818-632-7374)
Audio Visual—Michael Acosta (michaelacosta@earthlink.net)
A+ School Board Chair—Glen Christensen
(plbboss@aol.com)
A+ School Director—Malisa Smith (818-241-9353)
Facilities Administrator—Wayne Libby (760-409-6719)

Church Office Hours

Monday-Thursday 9:00 a.m.-4:00 p.m.; Friday 9:00 a.m.-2:00 p.m.

PROUD TO BE AN
ADVENTIST PEACE
FELLOWSHIP CHURCH
adventistpeace.org

